



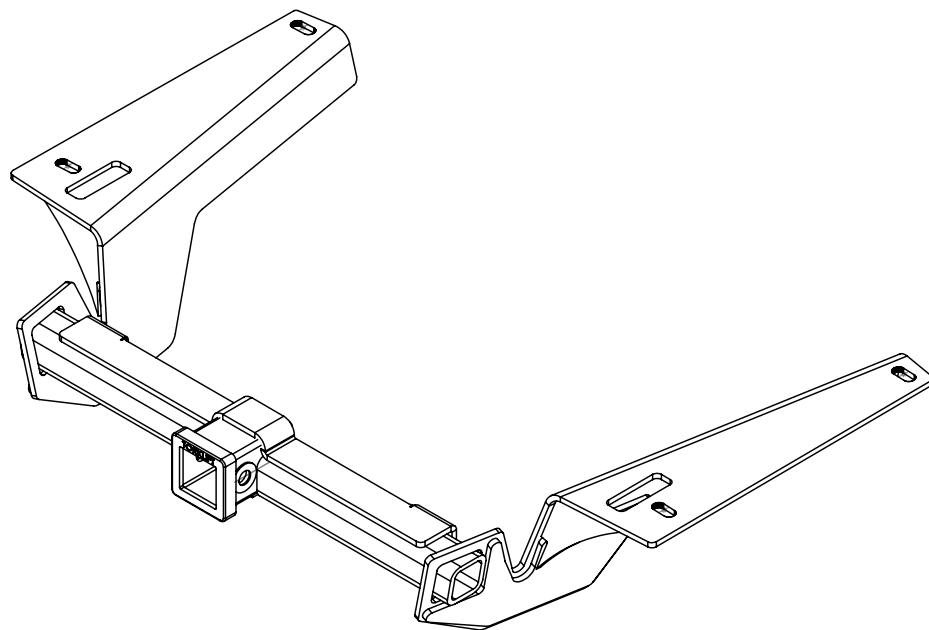
# Installation Instructions

Application Fits

2015+ Subaru WRX & WRX STI w/Factory Knockout  
X7257 & X7258

2" & 1.25" EcoHitch Invisi

3,500 lbs Weight Carrying/350 lbs. Tongue Weight



Torklift Central  
315 Central Ave N  
Kent, WA 98032  
253-854-1832

[www.torkliftcentral.com](http://www.torkliftcentral.com)  
[support@tlcentral.com](mailto:support@tlcentral.com)

**Stay Connected**



torkliftcentral



torkliftcentral



tlcentral



torklift central



torklift central



*Bolt Kit Weight: 623g +/-*

*Hardware Included*

QTY Fastener

- 4 1/2" Flat Washers
- 4 1/2" Inner Tooth Lock Washer
- 4 1/2"-13 Flange Nut
- 4 1/2"-13 x 2" Bolt
- 4 1/2"D-1"x2" Plate Washers
- 1 1/2" Bolt Fisher

**READ THESE INSTRUCTIONS THOROUGHLY AND ACCOUNT FOR ALL HARDWARE LISTED BEFORE BEGINNING INSTALLATION!**

**Step 1.** Raise vehicle on suitable jack stands or hoist.

**Step 2.** Remove the trunk room/floor mat.

**Step 3.** Remove the trunk lid trim panel by removing the (3) clips on the lower portion of the trim panel. See Figure [1].

**Step 4.** Release the claws, and remove the trim panel by pulling upward on the panel (trunk rear). See Figure [1].

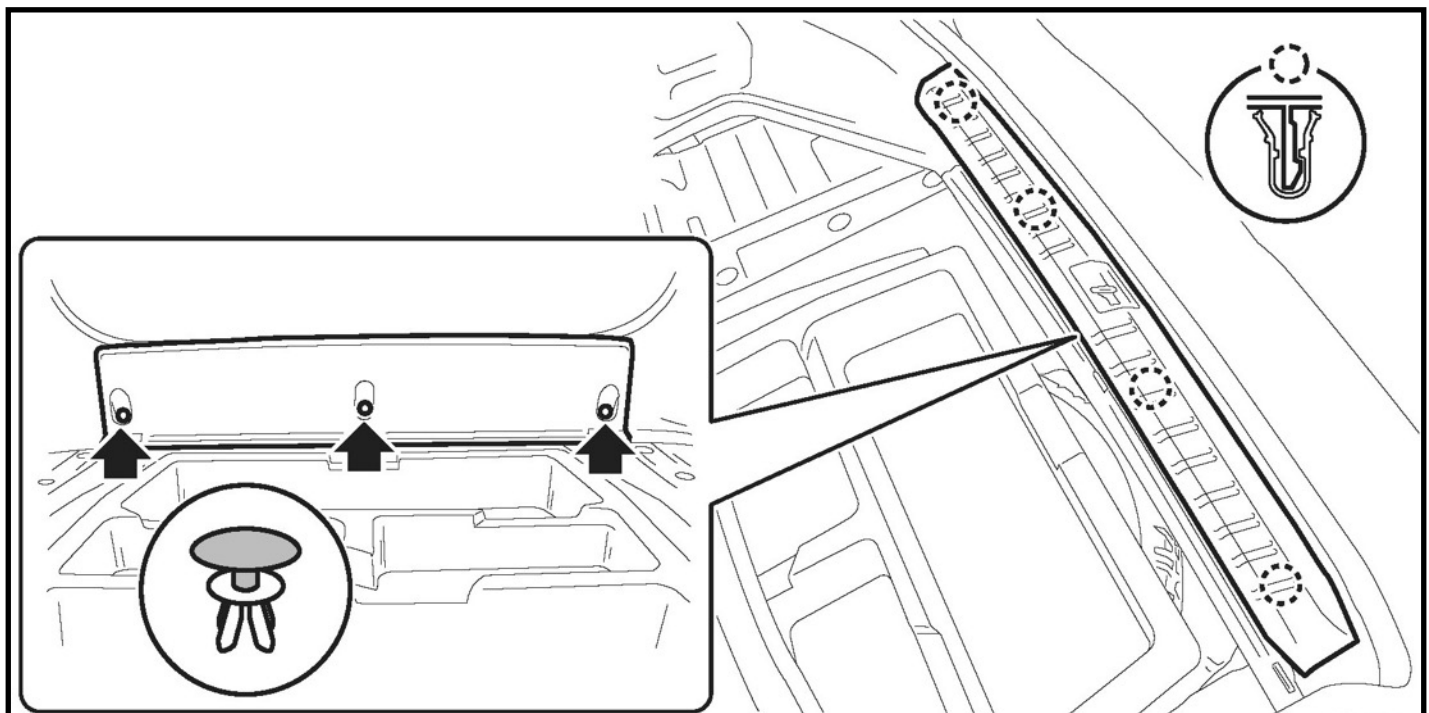


Fig. [1]

**Step 5.** Remove the trunk side trim panels on both the driver and passenger sides by removing all the black and white clips. See Figure [2].

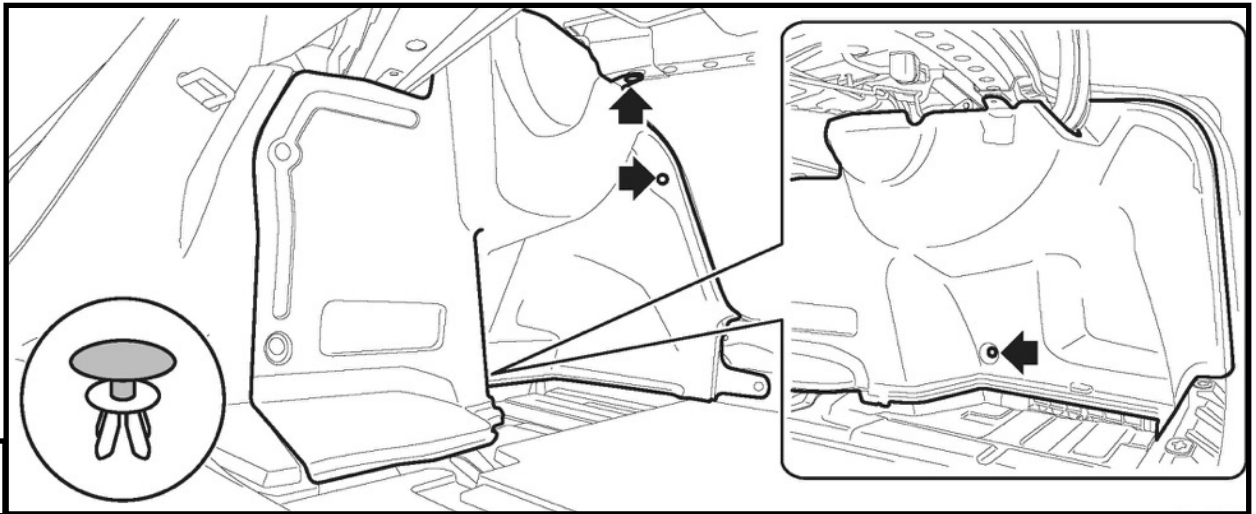


Fig. [2]

**Step 6.** Remove the rear light assembly by first removing the wire harness clamps and taillight connector. See Figure [3].

**Step 7.** Remove the nuts and clips, then remove the light assembly by sliding it rearward. See Figure [3].

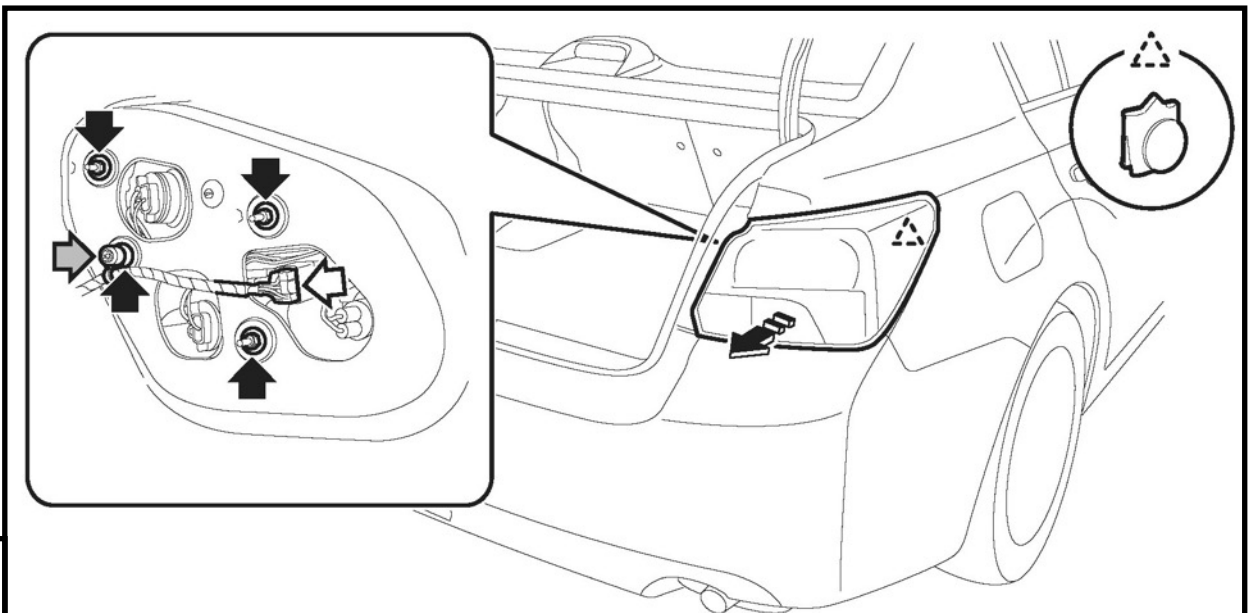


Fig. [3]

**Step 8.** Remove the clips inside the wheel housing by pushing in on the center of the clip. See Figure [4].

**Step 9.** Remove the clips on the lower side of the bumper face with a flathead screwdriver or other flat tool. See Figure [4].

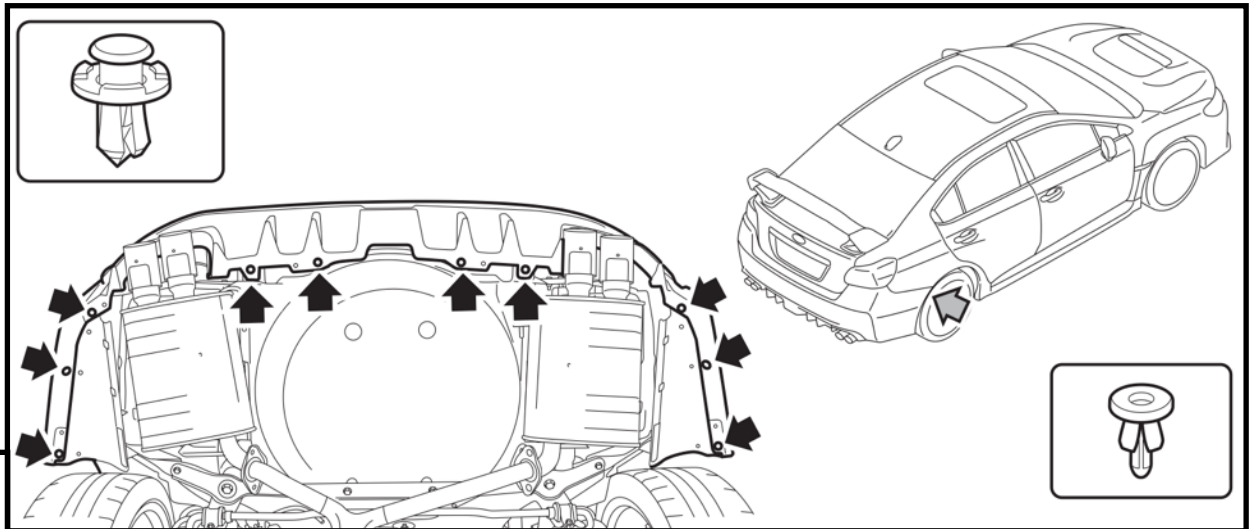


Fig. [4]

**Step 10.** To remove the bumper, start at the passenger side wheel well and detach (b) and (c) while pulling up (a) of the bumper face. Detach (e) while pulling up (d) of the bumper face. See Figure [5]. Continue around toward the back and begin pulling the bumper rearward at (f). Finish working your way to the driver side detaching in the same manner as the passenger side.

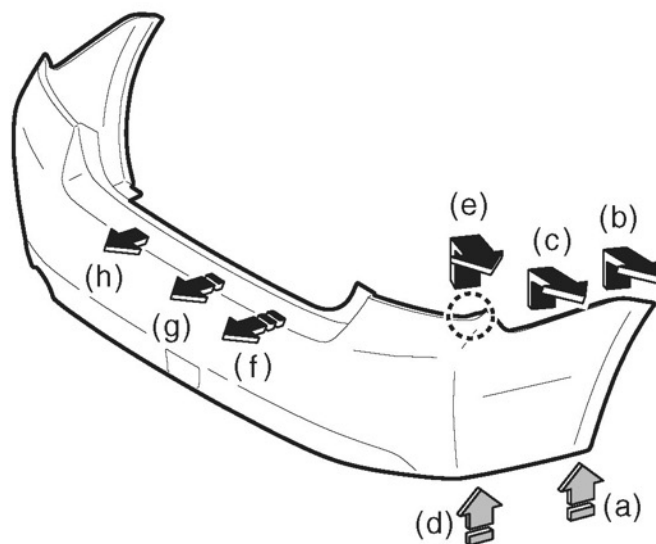


Fig. [5]

**Step 11.** Remove the bolts and nuts securing the impact bar to the vehicle and set aside. See Figure [6].

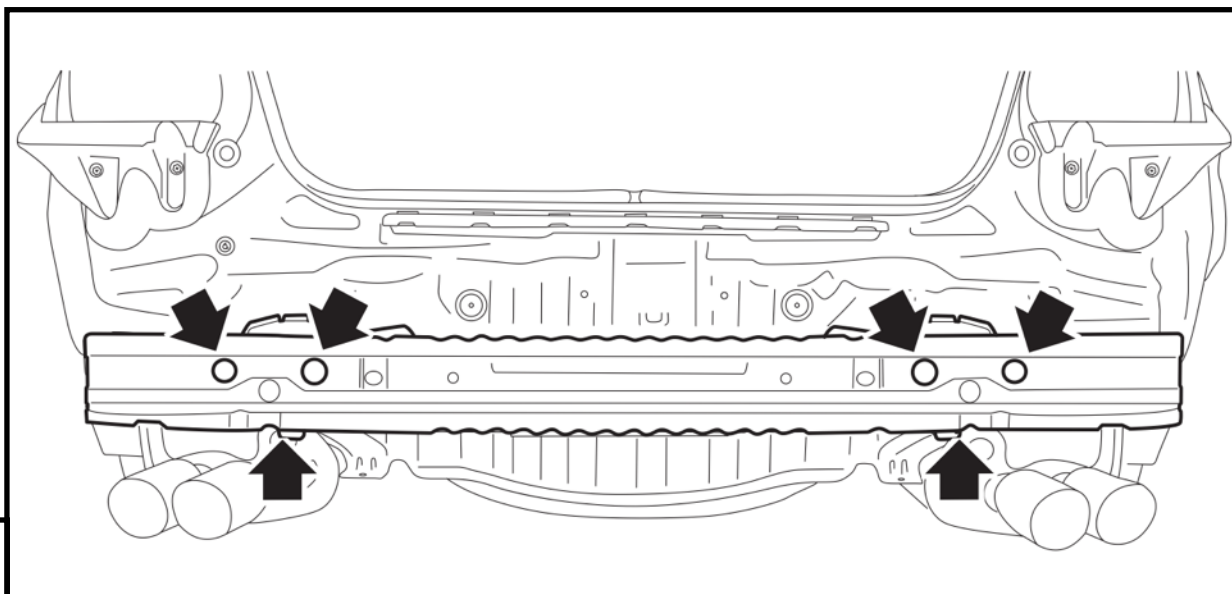


Fig. [6]

**Step 12.** Lower the exhaust the by removing the rubber exhaust bungs shown in Figure [7] & [8], using a lubricant such as WD-40 or equivalent. **DO NOT LET EXHAUST HANG FREELY!** Support the exhaust with a stand or other suitable prop to avoid non-warranted damage.

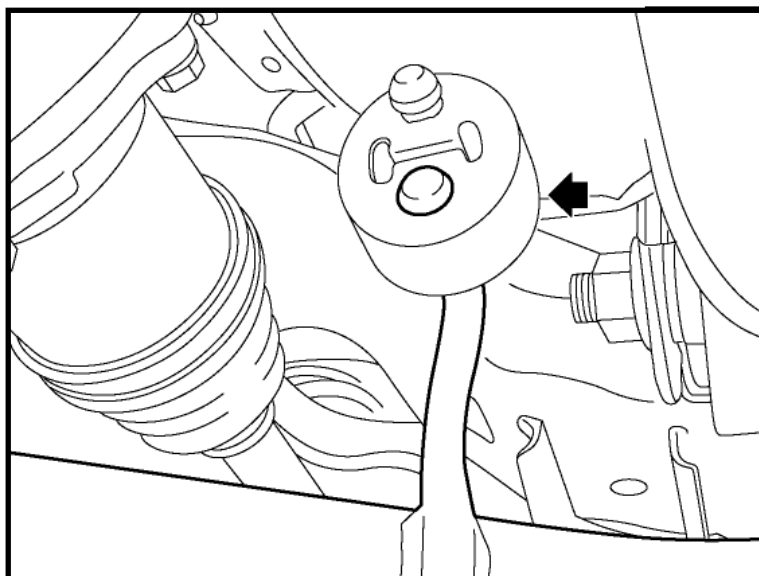


Fig. [7]

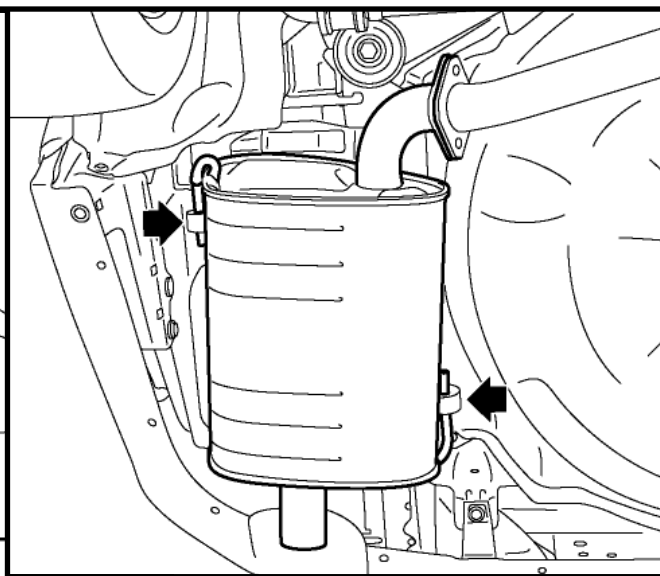
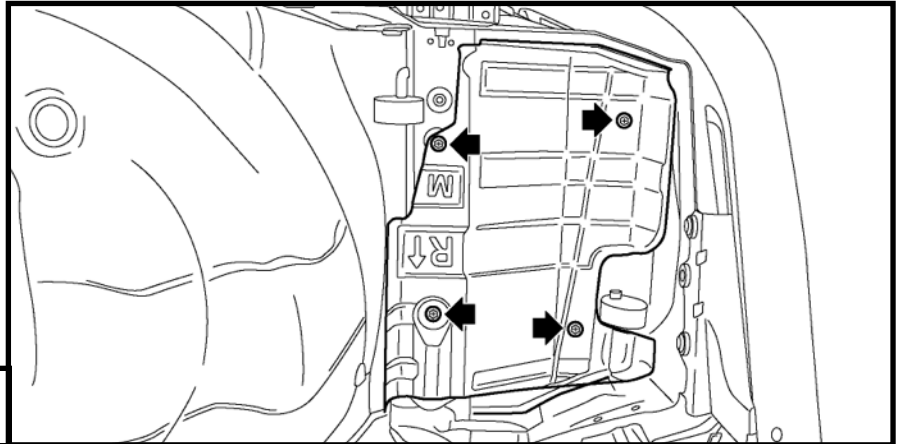


Fig. [8]

**Step 13.** Remove the exhaust heat shield by removing the (4) bolts holding the heat shield to the frame. Repeat on opposite side of vehicle. See Figure [9].

Fig. [9]



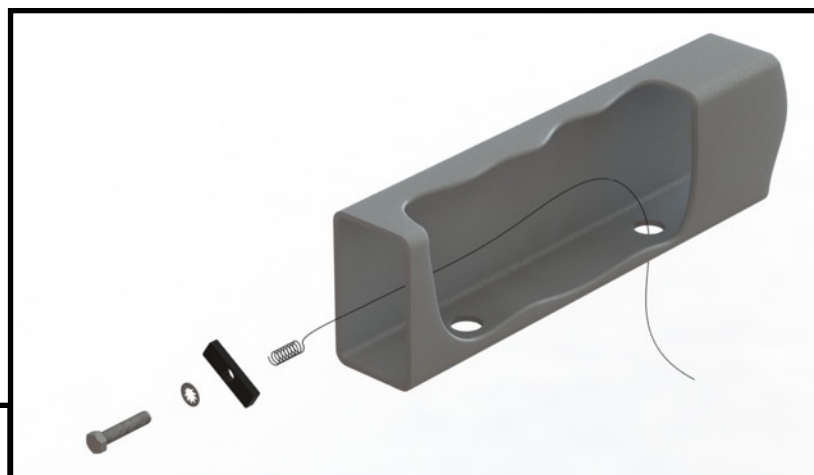
**Step 14.** Locate and remove the two outer rubber plugs located on each side of the frame rail. Repeat on opposite side of vehicle. See Figure [10]

Fig. [10]



**Step 15.** Take the coil end of the bolt fisher and feed it through the hole furthest forward that you unplugged, and out the frame rail at the rear. Attach (1) 1/2"x2" bolt, (1) 1/2" star lock washer, and (1) 1x2 plate washer, and pull the assembly into position in the hole. Repeat on remaining (3) frame rail openings. See Figure [11].

Fig. [11]





**Step 16.** Trim the heat shields following the highlighted portions as shown in Figure [12] & [13], to allow bolts to come through. Once trimmed, reinstall the heat shields but do not reinstall the bolts from the frame rail portion. The heat shield will be sandwiched between the hitch frame plate and vehicle frame rail.

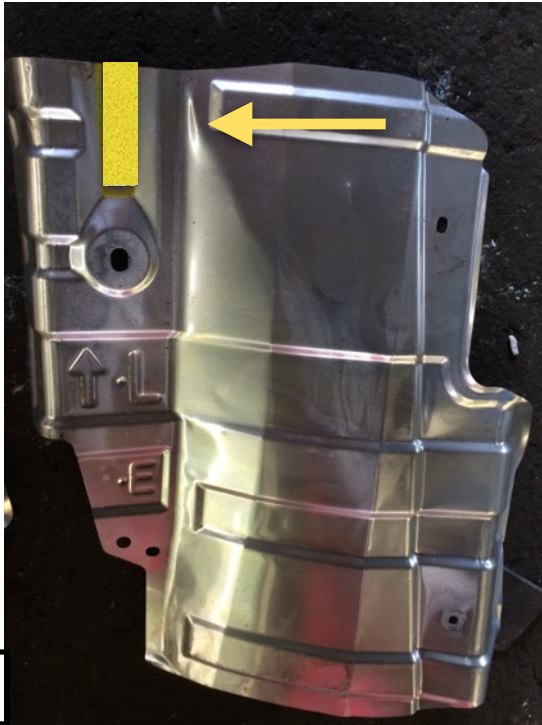


Fig. [12]

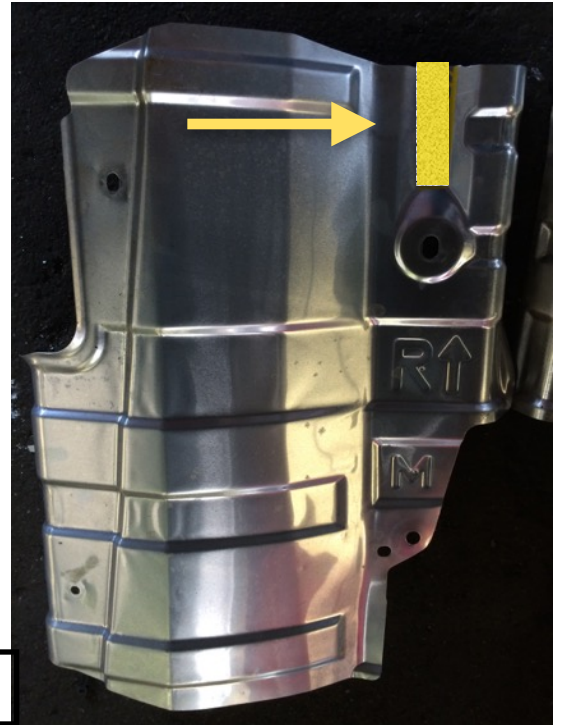


Fig. [13]

**Step 17.** Raise the hitch into position on the frame by placing the cross tube and receiver above the spare tire compartment lip. Once in position, rotate the frame plates up to the frame rails of the vehicle and through the bolts. Be cautious not to push the bolt hardware back into the frame rails. See Figure [14].

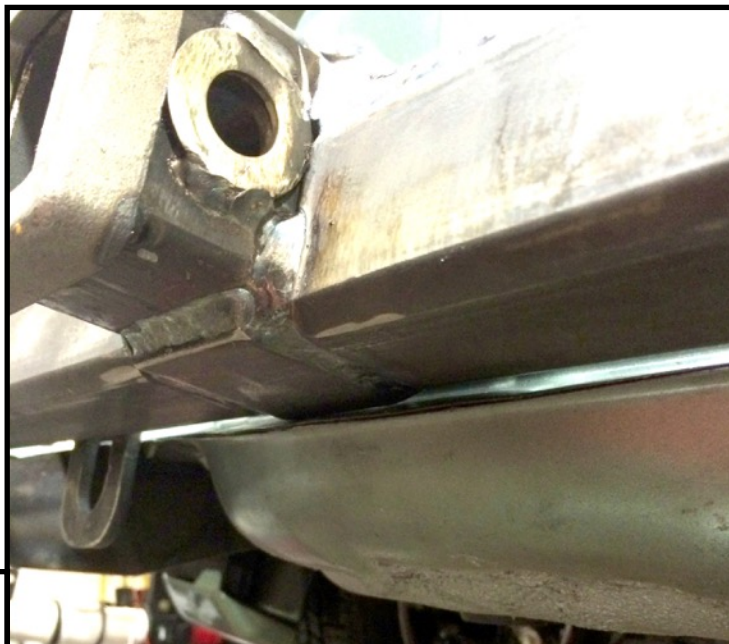


Fig. [14]

**Step 18.** Once hitch is in position on the frame rail bolts, take (1) 1/2" flat washer and (1) 1/2" flange nut and hand tighten. Repeat on all (3) remaining bolts.  
See Figure [15]. **DO NOT TORQUE BOLTS AT THIS TIME.**



Fig. [15]

**Step 19.** From the removed bumper, remove the factory knockout panel.  
**DO NOT DISCARD THIS PANEL.**

**Step 20.** Using a utility knife or air-saw, trim the factory knockout section along the highlighted section in Figure [16] to allow space for the receiver. Be sure not to cut the lower tab slots and face of the side edges shown in Figure [16] to allow the knockout to be replaced as designed.



Fig. [16]

**Step 21.** Carefully re-install bumper, lights, and trunk interior following these steps in reverse from Step 13. Torque the impact bar bolts and nuts to 50 ft-lbs. After the bumper is installed, center hitch in the factory knockout with the help of a mallet or pry bar. Once centered, torque the frame nuts to 75 ft-lbs and reinstall the exhaust. It may be helpful to re-lubricate the exhaust bungs before reinstallation.



**Congratulations on the completed installation of the Subaru WRX Invisi Hitch!** It is designed with a lifetime warranty for a lifetime of enjoyment. If you have any questions or suggestions please contact our tech support at [support@tlcentral.com](mailto:support@tlcentral.com) or by phone at 253 854-1832.

## OPTIONAL ADDITIONAL TRIMMING

Due to the tight tolerance of the bumper fascia to the vehicle frame, it can be difficult to access the knockout panel in front of the receiver. To allow for easier access of the knockout panel, we have outlined two optional steps.

**OPTION #1.** Carefully mark and trim with an air saw or utility knife, the highlight portion shown in Figure [18]. More or less of the bumper fascia may be trimmed at your desire.

**OPTION #2.** Remove the two lower clips shown by the arrows in Figure [18] each time and gently pull the bumper back towards you to insert your hitch pin and lock.

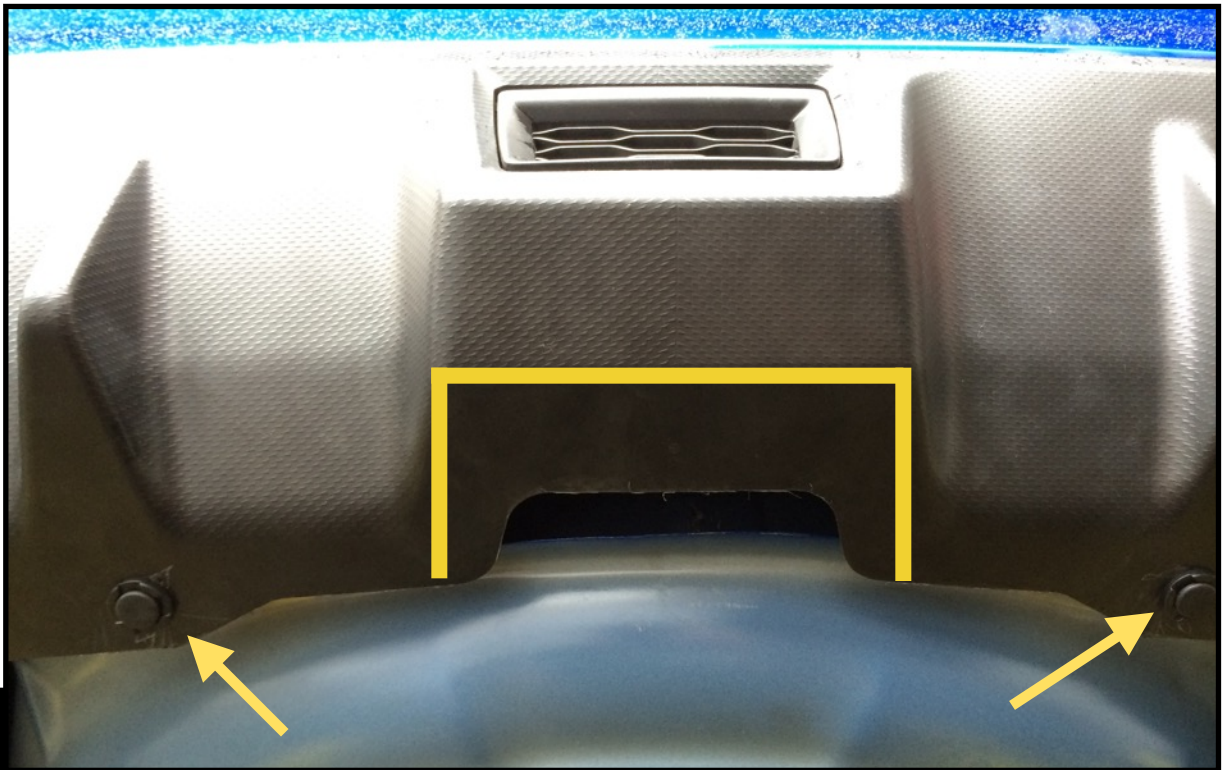


Fig. [18]

### \*\*\*NOTE\*\*\*

Any trailer hitch ballmount/insert or bike racks stinger cannot exceed 2-1/2" of an inch behind the center line of the pinhole. You may be required to cut your ballmount/insert or bike rack stinger to match this dimension. Failure to do so may result in insert/ballmount/bike rack stinger not lining up with pinhole and/or body damage to vehicle. If your insert is too long, the insert will contact the vehicle's body and may cause unwarranted damage to your vehicles sheet metal body that will not be warranted or covered by Torklift.

# WARRANTY/DISCLAIMER INFORMATION

Torklift Central requires proof of purchase for warranty claim registration, with pictures of any defective product before issuing a replacement. Torklift will not accept claims on any product without proof of purchase, which can be faxed, scanned, emailed or mailed to the information provided below. Torklift Central warrants its hitches, custom hitch receivers and accessories (excluding electrical wire harnesses which carry a warranty from their specified manufacturer) from date of purchase against defects in material and workmanship under normal use and service for the ownership life of the original consumer purchaser. Torklift Central will replace free of charge any part that proves defective in material or workmanship when presented to Torklift Central, transportation charges prepaid by purchaser, at the address below. **This warranty is limited to defective parts replacement only. Labor charges and/or damage incurred in installation or replacement, as well as incidental and consequential damages connected therewith are excluded.** This warranty does not include normal wear and tear or the finish and paint. Rusting, cracking or peeling of the finish is also excluded. Some states do not allow the exclusion or limitation of incidental or consequential damages, so the above limitation or exclusion may not apply to you. Any damage to Torklift Central products as a result of misuse, abuse, neglect, accident, improper installation or any use violative of instructions furnished by Torklift Central will void the warranty. This warranty gives you specific legal rights and you may also have rights, which vary from state to state. With warranty service, you may be able to go to a small claims court, a state court or a federal district court.

Although Torklift Central trailer hitches are both tested and rated for towing within the specific capacity label found on each trailer hitch. Torklift Central assumes no liability for vehicle manufacturers warranty due to the use of a Torklift Central trailer hitch being used for towing behind any vehicle or using the trailer hitch in a manner that it was not designed for. Although this specific trailer hitch has a load rating, which includes trailer tongue weight, and a trailer weight carrying capacity, Torklift Central is not responsible for the voiding of any warranty on any vehicle due to factory towing limitations. All vehicle warranties are the sole property and responsibility of the owner of the vehicle that the Torklift Central trailer hitch is installed upon. Torklift Central does not endorse towing behind any vehicle if the vehicles manufacturer states that towing is not recommended. Check your vehicle's owner's manual for the proper tow rating of your vehicle.

**ADDRESS:** 315 Central Ave N. Kent, WA 98032

**\*WARNING\*** Your vehicle may have a lower tow rating than this trailer hitch. If your vehicle's tow rating is less than the rated towing capacity on your Torklift Central trailer hitch, your trailer hitch capacity is limited to your vehicle's factory rated towing capacity.

**FOR EXAMPLE:** the label on your Torklift Central trailer hitch states it's capacity is rated for 500 pounds tongue weight and 5,000 pounds towing weight. However your vehicle's factory rated towing capacity is limited to only 350 pounds tongue weight and 3,500 pounds towing weight. In this example your maximum towing capacity of your Torklift Central trailer hitch is limited to 350 pounds tongue weight and 3,500 pounds towing weight as stated by your vehicle's maximum factory tow rating.

**\*DANGER\*** Never exceed your vehicle's manufacturer's recommended towing capacity which may be a lower rating than this trailer hitch

Unsure of your tow rating? Download our towing app from the app store to find your vehicles tow rating.  
[www.torkliftcentral.com/app.php](http://www.torkliftcentral.com/app.php)